



Air Freight Container Specifications

The following guide to airfreight containers, also called Unit Load Devices (ULD), has been developed from materials supplied by IATA (International Air Transport Association) and the ATA (Air Transport Association of America). This guide lists and illustrates the average external dimensions and weight limitations of the primary containers in use today. Exact dimensions and weight limitations will vary by manufacturer and availability will vary by air carrier and tradelane.

<p>LD-1 IATA ULD Code: AKC Contoured Container Also known as: AVC, AVD, AVK, AVJ Forkable: AVY Classification: LD-1 Rate Class: Type 8 Suitable for: B747, B767, B777, MD-11 Internal volume: 4.8 cu. m (169.5 cu. ft) Maximum gross weight: 1588 kg (3501 lb)</p>		<p>LD-6 IATA ULD Code: ALF Contoured Container Also known as: AWD, AWF Forkable: AWC Classification: LD-6 Rate Class: Type 6W Suitable for: A300, A310, A330, A340, B747, B777, DC-10, MD-11, L1011 Internal volume: 8.9 cu. m (314 cu. ft) Maximum gross weight: 3175 kg (7000 lb)</p>	
<p>LD-2 IATA ULD Code: DPE Contoured Container Also known as: APA, DPA Forkable: DPN Classification: LD-2 Rate Class: Type 8D Suitable for: B767 Internal volume: 3.4 cu.m (120 cu. ft) Maximum gross weight: 1225 kg (2700 lb)</p>		<p>LD-7 IATA ULD Code: XAW P1P Pallet with fixed angle wings and net Classification: LD-7 Rate Class: Type 5 Suitable for: Wide body: All aircraft Maximum volume with overhang: 14.0 cu. m (494 cu. ft) Maximum gross weight: 5000 kg (11023 lb)</p>	
<p>LD-3 IATA ULD Code: AKE Contoured Container Also known as: AKE, AVA, AVB, AVC, AVK, DVA, DVE, DVP, XKS, XKG Forkable: AKN, AVN, DKN, DVN, XKN Classification: LD-3 Rate Class: Type 8 Suitable for: A300, A310, A330, A340, B747, B767, B777, DC-10, MD-11, L1011 Internal volume: 4.3 cu. m (152 cu. ft) Maximum gross weight: 1588 kg (3500 lb)</p>		<p>LD-8 IATA ULD Code: DQF Also known as: ALE, ALN, DLE, DLF, DQP, MQP Classification: LD-8 Rate Class: Type 6A Suitable for: B767 Internal volume: 6.85 cu. m (242 cu. ft) Maximum gross weight: 2450 kg (5401 lb)</p>	
<p>Insulated LD-3 IATA ULD Code: RKN Classification: LD-3 Rate Class: Type 8 Suitable for: A300, A310, A330, A340, B747, B767, B777, DC-10, MD11, L1011 Internal volume: 3.0 cu.m (109 cu. ft) Maximum gross weight: 1588 kg (3500 lb) Temperature Control Range: -20C to +20C</p>		<p>LD-9 IATA ULD Code: AAP Enclosed Pallet on P1P base Also known as: AA2, XAG, XAV Classification: LD-9 Rate Class: Type 5 Suitable for: A300, A310, A330, A340, B747, B767, DC-10, MD-11, L1011 Internal volume: 9.1 cu. m (321 cu. ft) Maximum gross weight: 4624 kg (10194 lb) lower deck 6000 kg (13227 lb) main deck</p>	
<p>LD-4 IATA ULD Code: ALP Rectangular Container Also known as: ALD, AWD, AWZ, DLP Forkable: ALB, ALC, AWB, AWC Classification: LD-4 Rate Class: Type 8 Suitable for: B767, B777 Internal volume: 5.7cu. m (201 cu. ft) Maximum gross weight: 2449 kg (5399 lb)</p>		<p>LD-11 IATA ULD Code: ALP Rectangular Container Also known as: ALD, AW2, AWB, AWD, AWZ, DLP, DWB, MWB Refrigerated version: RWB, RWD, RWZ Classification: LD-11 Rate Class: Type 6 Suitable for: A300, A310, A330, A340, B747, B777, DC-10, MD-11, L1011 Internal volume: 7.2 cu. m (253 cu. ft) Maximum gross weight: 3176 kg (7002 lb)</p>	
<p>LD-4 IATA ULD Code: ALP Rectangular Container Also known as: ALD, AWD, AWZ, DLP Forkable: ALB, ALC, AWB, AWC Classification: LD-4 Rate Class: Type 8 Suitable for: B767, B777 Internal volume: 5.7cu. m (201 cu. ft) Maximum gross weight: 2449 kg (5399 lb)</p>		<p>A-2 IATA ULD Code: DAA Classification: A-2 Suitable for: B747, B747F, DC8, DC10, A300/F Internal volume: 12.6 cu. m (444 cu. ft) Maximum gross weight: 6033 kg (13300 lb)</p>	



SEA CONTAINER SPECIFICATIONS

DRY CARGO CONTAINERS



● DIMENSIONS

Type	Container Weight			Interior Measurement				Door Open	
	Gross (kg)	Tare (kg)	Net (kg)	Length (m)	Width (m)	Height (m)	Capacity (m ³)	Width (m)	Height (m)
20 ft	24,000	2,370	21,630	5.898	2.352	2.394	33.20	2.343	2.280
40 ft	30,480	4,000	26,480	12.031	2.352	2.394	67.74	2.343	2.280

● CHARACTERISTICS

Manufactured from either Aluminium or steel, they are suitable for most types of cargo / general cargo. Aluminium containers have a slightly larger payload than steel, and steel containers have a slightly larger internal cube

REFRIGERATED CONTAINERS



● DIMENSIONS

Type	Container Weight			Interior Measurement				Door Open	
	Gross (kg)	Tare (kg)	Net (kg)	Length (m)	Width (m)	Height (m)	Capacity (m ³)	Width (m)	Height (m)
20 ft	24,000	3,050	20,950	5.449	2.290	2.244	26.70	2.276	2.261
40 ft	30,480	4,520	25,960	11.690	2.250	2.247	57.10	2.280	2.205

● CHARACTERISTICS

Recommended for delicate cargo. Bottom-air delivery system ensures refrigerated cargo reaches its destination in optimum condition.

OPEN TOP CONTAINERS



● DIMENSIONS

Type	Container Weight			Interior Measurement				Door Open	
	Gross (kg)	Tare (kg)	Net (kg)	Length (m)	Width (m)	Height (m)	Capacity (m ³)	Width (m)	Height (m)
20 ft	24,000	2,580	21,420	5.629	2.212	2.311	32.00	2.330	2.263
40 ft	30,480	4,290	26,190	11.763	2.212	2.311	65.40	2.330	2.263

● CHARACTERISTICS

Allowing cargo to be loaded from the top, open top containers are particularly suitable for bulky cargo such as machinery. They are fitted with a PVC tarpaulin cover and attachable bows with cable sealing devices. The container doors can be removed to make the stuffing of cargo more convenient. Manufactured from steel

FLAT RACK CONTAINERS



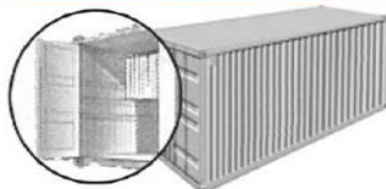
● DIMENSIONS

Type	Container Weight			Interior Measurement			
	Gross (kg)	Tare (kg)	Net (kg)	Length (m)	Width (m)	Height (m)	Capacity (m ³)
20 ft	30,480	2,900	27,580	5.624	2.236	2.234	27.90
40 ft	34,000	5,870	28,130	11.786	2.236	1.968	51.90

● CHARACTERISTICS

Flatracks are especially suited to heavy loads or cargo that needs loading from the top or sides, such as pipes and machinery. There are collapsible and non-collapsible containers with or without walls. Manufactured from steel.

GARMENT CONTAINERS



● DIMENSIONS

Type	Container Weight			Interior Measurement				Door Open	
	Gross (kg)	Tare (kg)	Net (kg)	Length (m)	Width (m)	Height (m)	Capacity (m ³)	Width (m)	Height (m)
20 ft	24,000	2,240	21,760	5.898	2.352	2.394	33.20	2.343	2.280
40 ft	30,480	3,885	26,595	12.031	2.352	2.394	67.74	2.343	2.280

● CHARACTERISTICS

Use for all kinds of garment. The containers are specially designed for garment product and related industry. There are some options of using a string or bar system or a combination of both. The containers allow increased flexibility, greater load Internal Capacity and savings on transportation and handling cost.

HIGH CUBE CONTAINERS



● DIMENSIONS

Type	Container Weight			Interior Measurement				Door Open	
	Gross (kg)	Tare (kg)	Net (kg)	Length (m)	Width (m)	Height (m)	Capacity (m ³)	Width (m)	Height (m)
40 ft	30,480	3,980	26,500	12.031	2.352	2.698	76.30	2.340	2.585
45 ft	30,480	4,800	25,680	13.544	2.352	2.698	86.00	2.340	2.585

● CHARACTERISTICS

With high cube containers, you gain an extra foot in height compared with general-purpose containers. Ideal for light, voluminous cargo or bulky cargo. These extra volume containers come in steel and aluminium.